

# CHISON 9300VET

Premium Image, Surprising Performance

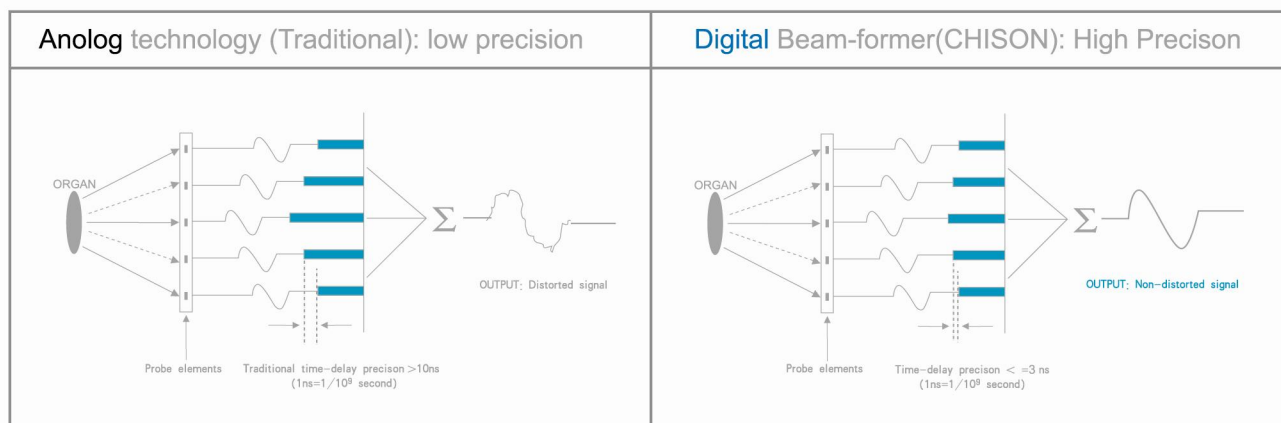


# CHISON 9300VET

DIGITAL ULTRASOUND SYSTEM



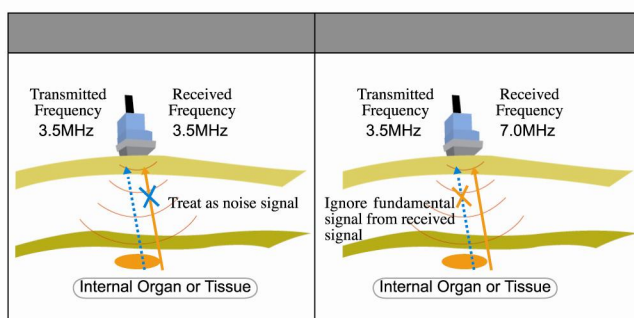
## Full digital beam-former



## Harmonic Imaging



No harmonic



Harmonic

## Ergonomic Keyboard

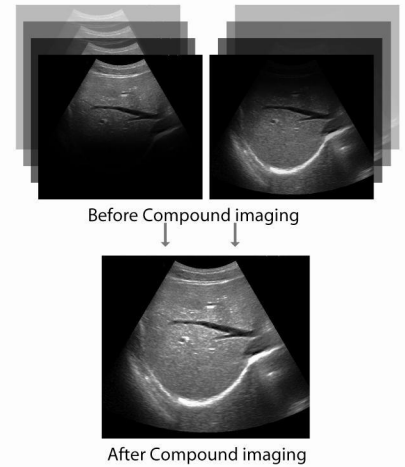
- ◇ Back-lit keyboard for good visibility in dark room
- ◇ 8 STC slides for easy adjustment
- ◇ Multi-function knob and toggle for quick adjustment
- ◇ Neat & Clear keyboard layout, doctor can remember easily
- ◇ Print directly from keyboard



## Compounding Technology

Traditional compound imaging technology dramatically improves image quality, but this comes with a significant reduction in frame rate, which can affect your ability to make an effective diagnosis.

CHISON has engineered a proprietary compounding algorithm that integrates numerous key factors, including frequency, focus and time. The result is an impressive improvement in image quality without sacrificing frame rate.



## Ergonomic Design

Two probe connectors

Shortcut keys

8 STC

One-key quick storage



## Innovative Technology





# Specifications

Scanning Methods	Electronic Convex/Electronic Linear/Electronic Micro-convex
Applications	Abdomen, OB&GYN, Small parts, Reproduction, Cardiology, etc.
Display Modes	B, B/B, 4B, M, B/M
Gray Scale	256 Levels
Scanning Techniques	Real-time dynamic imaging: RDF, RDA, DFS, DRA Harmonic imaging
Scanning Depth	240mm Max (depend on the probe types)
Probe Frequency	2.5Mhz -10.0Mhz (Depend on the probe types)
No.of Probe Connectors	1 (Standard), 2 (Optional)
Monitor	10-inch SVGA high resolution monitor
Cine Loop	128 frames
Image Storage	Permanent storage on Built-in memory, and USB disk and built-in hddisk 250G.
Zoom	4 steps
Image Processing	Pre-processing: IP selection, dynamic range, edge enhancement, smooth, frame averaging, scanning angle selection, line density selection etc. Post-processing: $\gamma$ correction, gray transformation, gray rejection etc. STC: 8slides for Near, Far and Overall gain control.
Image Reversing	Left/right, Up/Down
Software Packages	Canine: GS, CRL, HD, BD Feline:HD,BD Equine:GS Bovine:BPD,CRL,Trunk Diameter Ovine:BPD,CRL,Trunk Diameter
General Measurements	B mode:distance,circumference,area,volume,angle,% stenosis,histogram,profile etc. M mode:distance,time,velocity,heart rate etc.
Archives Management	Patient information management
Documentation	Full screen documentation,hospital name,patient name,date/time Annotation database available,pre-saved phrases can be recalled
Power Supply	AC 230V $\pm$ 10%, 50Hz(standard)/AC110V $\pm$ 10%,60Hz (Upon customer request)
Standard Configuration	Main unit + 6.0MHz Micro convex probe +1probe connector+ 2 USB ports +VGA port+DICOM3.0.
Option	6.0MHz Micro-Convex probe,5.0MHz Micro-Convex probe,5.0MHz Linear Rectal ,7.5MHz Linear probe, 3.5MHz Convex probe, 2 probe connector,USB flash disk ,Trolley(TR-8000) ,Video printer ,DICOM,Internal Battery, built-in hard disk 250G,Vehicle power charger adapter , CINE off-line viewer,kitbag,suitcase.



6.0MHz Micro-Convex  
(C156165)



5.0MHz Micro-Convex  
(C206155)



5.0MHz Linear Rectal  
(L746155)



7.5MHz Linear  
(L406175)



3.5MHz Convex  
(C606135)

## CHISON MEDICAL IMAGING CO.,LTD.

### Factory Address:

NO.8, Xiang Nan Road, Shuo Fang, New District, Wuxi, Jiang Su Province, CHINA 214142

### Sales & Service Contact Address:

No. 9 Xin Hui Huan Road, New District, Wuxi, Jiang Su Province, China214028

TEL: 0086-510-85310593 / 85310937 FAX: 0086-510-85310726 EMAIL: export@chison.com.cn